

LMF(K)P...LUU尼龍保持架
該類型尺寸是公制的，廣泛應用於亞洲和其他國家。

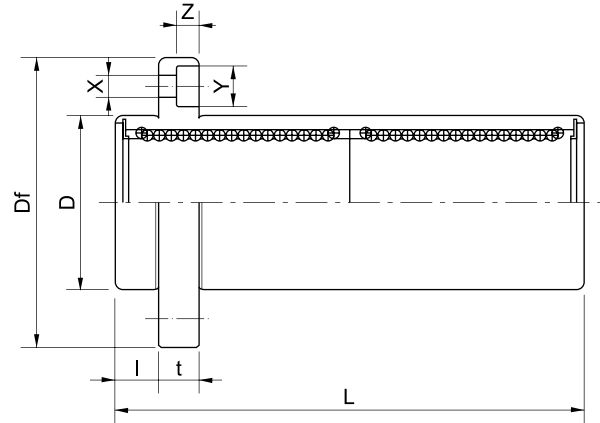
LMF(K)P...LUU (Resin retainer)
This type is a metric dimension series
widely used in Asia and other
countries.



LMFP...LUU

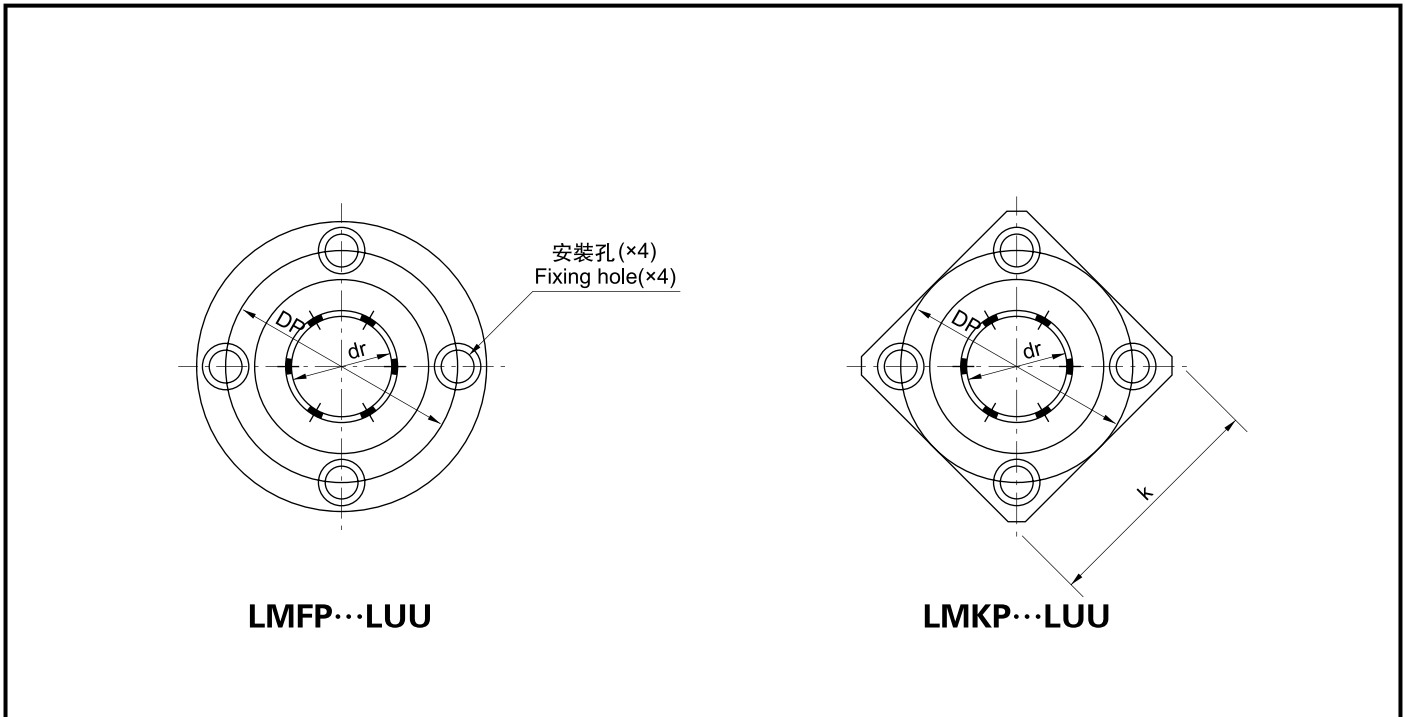


LMKP...LUU



| 公稱軸徑 Nominal shaft diameter mm | 加長導向圓法蘭 LMFP...LUU | 重量 Weight (gf) | 加長導向方法蘭 LMKP...LUU | 重量 Weight (gf) | 主要尺寸和公差 Major dimensions and tolerance | | | | | |
|--|-----------------------|----------------------|-----------------------|----------------------|--|-----------------------|----|-----------------------|-----|-----------------------|
| | | | | | dr | | D | | L | |
| | | | | | mm | 公差 Tolerance μm | mm | 公差 Tolerance μm | mm | 公差 Tolerance μm |
| 6 | LMFP6LUU | 31 | LMKP6LUU | 25 | 6 | | 12 | 0 | 35 | ±300 |
| 8 | LMFP8LUU | 51 | LMKP8LUU | 43 | 8 | | 15 | -13 | 45 | |
| 10 | LMFP10LUU | 98 | LMKP10LUU | 78 | 10 | 0 | 19 | | 55 | |
| 12 | LMFP12LUU | 110 | LMKP12LUU | 90 | 12 | -10 | 21 | 0 | 57 | 0 |
| 13 | LMFP13LUU | 130 | LMKP13LUU | 108 | 13 | | 23 | -16 | 61 | |
| 16 | LMFP16LUU | 190 | LMKP16LUU | 165 | 16 | | 28 | | 70 | |
| 20 | LMFP20LUU | 260 | LMKP20LUU | 225 | 20 | | 32 | 0 | 80 | -300 |
| 25 | LMFP25LUU | 540 | LMKP25LUU | 500 | 25 | 0 | 40 | -19 | 112 | |
| 30 | LMFP30LUU | 680 | LMKP30LUU | 590 | 30 | -12 | 45 | | 123 | |
| 35 | LMFP35LUU | 1,020 | LMKP35LUU | 930 | 35 | | 52 | 0 | 135 | 0 |
| 40 | LMFP40LUU | 1,570 | LMKP40LUU | 1,380 | 40 | 0 | 60 | -22 | 151 | |
| 50 | LMFP50LUU | 3,600 | LMKP50LUU | 3,400 | 50 | -15 | 80 | | 192 | |
| 60 | LMFP60LUU | 4,500 | LMKP60LUU | 4,060 | 60 | 0 -20 | 90 | 0 -25 | 209 | -400 |

注：所有LMFP...LUU/LMKP...LUU型均為雙密封。
Note: All sizes of LMFP...LUU/LMKP...LUU type are sealed on both sides.



| 主要尺寸和公差 Major dimensions and tolerance | | | | | | | | 偏心 Eccentricity μm | 垂直度 Squareness μm | 額定負荷 Basic load rating | |
|--|----------|---------|---------|----------|---------|---------|---------|-------------------------------------|------------------------------------|---------------------------|-----------------------|
| 法蘭 Flange | | | | | | | | | | 動負荷 Dynamic C N | 靜負荷 Static Co N |
| I mm | Df mm | K mm | t mm | Dp mm | X mm | Y mm | Z mm | | | | |
| 5 | 28 | 22 | 5 | 20 | 3.5 | 6 | 3.1 | 15 | 15 | 323 | 529 |
| 5 | 32 | 25 | 5 | 24 | 3.5 | 6 | 3.1 | | | 431 | 784 |
| 6 | 40 | 30 | 6 | 29 | 4.5 | 7.5 | 4.1 | | | 588 | 1,100 |
| 6 | 42 | 32 | 6 | 32 | 4.5 | 7.5 | 4.1 | | | 813 | 1,570 |
| 6 | 43 | 34 | 6 | 33 | 4.5 | 7.5 | 4.1 | | | 813 | 1,570 |
| 6 | 48 | 37 | 6 | 38 | 4.5 | 7.5 | 4.1 | | | 1,230 | 2,350 |
| 8 | 54 | 42 | 8 | 43 | 5.5 | 9 | 5.1 | 20 | 20 | 1,400 | 2,740 |
| 8 | 62 | 50 | 8 | 51 | 5.5 | 9 | 5.1 | | | 1,560 | 3,140 |
| 10 | 74 | 58 | 10 | 60 | 6.6 | 11 | 6.1 | | | 2,490 | 5,490 |
| 10 | 82 | 64 | 10 | 67 | 6.6 | 11 | 6.1 | 25 | 25 | 2,650 | 6,270 |
| 13 | 96 | 75 | 13 | 78 | 9 | 14 | 8.1 | | | 3,430 | 8,040 |
| 13 | 116 | 92 | 13 | 98 | 9 | 14 | 8.1 | | | 6,080 | 15,900 |
| 18 | 134 | 106 | 18 | 112 | 11 | 17 | 11.1 | 30 | 30 | 7,550 | 20,000 |

國際單位: 1N=0.102kgf
SIUNIT: 1N=0.102kgf